

# AI PRODUCTIVITY ROADMAP

**NAVIGATING PRODUCTIVITY OF THE INDUSTRY  
IN THE DIGITAL AND AI ERA**

**FOR PRIVATE MEDICAL CLINICS**



Published and printed by

**Malaysia Productivity Corporation**

Aras 1, Aras 9-15 (East Wing), Aras 21,  
Menara MATRADE, Jalan Sultan Haji Ahmad Shah,  
50480 Kuala Lumpur, Malaysia



603 7955 7266



<https://www.mpc.gov.my>



**Published in August 2025**

All rights reserved. No part of this publication may be reproduced or distributed in any form or by any means or stored in a database without the prior written permission from Malaysia Productivity Corporation.

Users reproducing content of this publication with or without adaptation should quote the following:

“Source: Malaysia Productivity Corporation”



MPCProductivity

# YOUR AI JOURNEY: WHAT WE'LL EXPLORE

**01** **Welcome & Vision:**  
Setting the Stage for Your Clinic's Future



**07** **Full-spectrum Journey:**  
Driving AI-powered Productivity for Holistic Success



**02** **Malaysia's Private Healthcare Landscape:**  
Unlocking Vast Potential



**08** **Connecting You to Solutions:**  
AI Adoption in Private Medical Clinics



**03** **Navigating the AI Productivity Frontier:**  
Overcoming Challenges



**09** **AI Productivity Journey:**  
Elevating Patient Registration and Care Transition



**04** **Unlocking National Competitiveness:**  
Your Clinic's Pivotal Role



**10** **Real-World Productivity Success Stories:**  
AI & Digitalisation in Action



**05** **Activating Your AI Advantage:**  
The Ecosystem for Clinic Transformation



**11** **Your First Step:**  
Begin Your AI Transformation Journey



**06** **Exploring AI:**  
Understanding Your Digital Transformation Journey



# WELCOME & VISION: SETTING THE STAGE FOR YOUR CLINIC'S FUTURE



To boost national productivity, we must harness the power of AI and digital technologies—every sector, every individual has a role to play by equipping themselves with the right knowledge, skills, and competencies to stay ahead.

## **Datuk Zahid Ismail**

Director General  
Malaysia Productivity Corporation

In today's complex private healthcare landscape, AI isn't just another tool; it's the strategic advantage, the pathway to elevating your clinic's performance and delivering truly exceptional patient outcomes. This roadmap isn't just a guide; it's your blueprint for a transformative journey, clearly charting a course towards a future where your clinic excels in productivity and redefines elevated care.



**Dato Dr. Jacob Thomas**

Champion

Private Healthcare Productivity Nexus



# MALAYSIA'S PRIVATE HEALTHCARE LANDSCAPE: UNLOCKING VAST POTENTIAL

Malaysia's private healthcare sector is not just growing; it's a dynamic force, rapidly expanding to meet the evolving needs of our nation. Far from being an alternative, your clinics stand as vital pillars, attracting patients with the promise of enhanced accessibility, truly personalised care, and the swifter attention they value most. This vibrant landscape presents unique opportunities for innovation.

## INDUSTRY OVERVIEW OF PRIVATE HEALTHCARE MALAYSIA



**Number of Establishments**  
33,992 (2025)<sup>1</sup>



**Number of Employees**  
88,315 (2023)<sup>2</sup>



### Key Sub Sectors

- Medical Clinics
- Dental Clinics
- Private Hospital



**GDP Contribution**  
2.1% (2023)<sup>3</sup>



### Value Chain / Supply Chain

- Suppliers
- Logistics Provider
- Healthcare Provider
- Patients



### Productivity Level / Growth

RM76,808 as for value added per employment with 4.9% growth rate (2024)<sup>4</sup>

Sources:






1. CKAPS Website. Retrieved from: <https://hq.moh.gov.my/medicalprac/statistik/>

2. Health Facts 2024

3. MIDF Research May 2025. Retrieved from: [https://www.midf.com.my/sites/corporate/files/2025-05/thematic-malaysia\\_healthcare-midf-050525\\_2.pdf](https://www.midf.com.my/sites/corporate/files/2025-05/thematic-malaysia_healthcare-midf-050525_2.pdf)

4. Department of Statistics Malaysia (DOSM)

# NAVIGATING THE AI PRODUCTIVITY FRONTIER: OVERCOMING CHALLENGES

| Areas   | Challenges   | Opportunities   |
|---|--|---|
|  <p><b>Data Integrity &amp; Accessibility</b></p>            | <p>Fragmented, inconsistent, or incomplete healthcare data currently hinders effective AI model training</p>                                     | <p>We see this as a vital opportunity for you to standardise and enrich your clinic's data, unlocking invaluable insights for the future</p>  |
|  <p><b>Seamless Integration &amp; Standardisation</b></p>    | <p>Lack of standardised data formats and protocols complicates integration with existing systems and data exchange</p>                           | <p>True efficiency becomes a reality when your systems are seamlessly connected, transforming daily operations</p>  |
|  <p><b>Strategic Investment &amp; Infrastructure</b></p>     | <p>Significant upfront costs for hardware, software, and integration, alongside limitations in existing IT infrastructure, are real concerns</p> | <p>However, it is crucial to consider the substantial long-term return on investment (ROI) and the undeniable competitive advantage that a modernised infrastructure will deliver</p> |
|  <p><b>Robust Data Privacy &amp; Security</b></p>          | <p>Crucial need for robust measures to protect sensitive patient information from breaches</p>   | <p>Ensuring unwavering patient trust through robust security measures is paramount and, crucially, entirely achievable for your clinic</p>  |
|  <p><b>Regulatory Clarity &amp; Ethical Guidelines</b></p> | <p>Absence of specific AI in healthcare legislation creates ambiguity regarding accountability and ethical use</p>                               | <p>This evolving regulatory landscape presents a unique opportunity where your collaborative insights can actively help shape the industry's best practices</p>                       |

# NAVIGATING THE AI PRODUCTIVITY FRONTIER: OVERCOMING CHALLENGES

| Areas   | Challenges  | Opportunities   |
|---|---|---|
|  <p><b>Mitigating Algorithmic Bias</b></p>         | <p>Potential for AI models to perpetuate biases from training data, leading to unfair outcomes</p>                | <p>Addressing algorithmic bias is a critical priority, and we are fully committed to ensuring fairness through rigorous development and validation processes</p>  |
|  <p><b>Transparency &amp; Interpretability</b></p> | <p>Black box nature of complex AI models makes understanding their decision-making difficult for clinicians</p>   | <p>Our aim is to provide intuitive tools and clear insights that illuminate AI's reasoning, thereby empowering your clinical decisions with greater confidence</p>                                      |
|  <p><b>AI Literacy &amp; Skills</b></p>           | <p>Insufficient AI literacy and skills among healthcare professionals, requiring extensive training</p>           | <p>Crucially, this roadmap includes dedicated pathways designed to fully equip your valuable team with the essential skills required for tomorrow's dynamic healthcare landscape</p>                    |
|  <p><b>Resistance to Change</b></p>              | <p>Hesitation from healthcare staff to adopt new technologies due to various concerns, including job security</p> | <p>We fully understand these natural concerns, and our core approach is specifically designed to enhance existing roles, not replace them, ensuring a smooth and supportive transition for everyone</p> |
|  <p><b>Clinical Validity &amp; Trust</b></p>     | <p>AI solutions require rigorous clinical validation to gain trust and acceptance from medical communities</p>    | <p>Our steadfast commitment is to collaborate on rigorous, evidence-based validation, thereby ensuring that AI will always complement and significantly strengthen your clinical judgement</p>          |

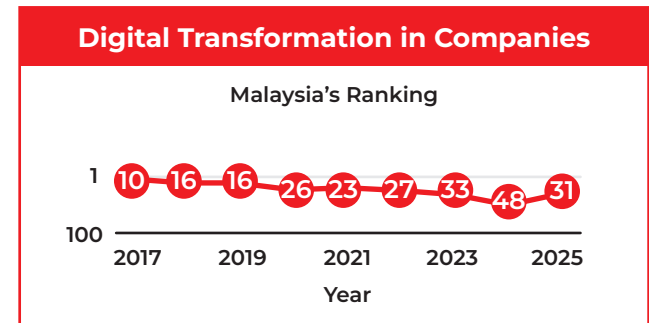
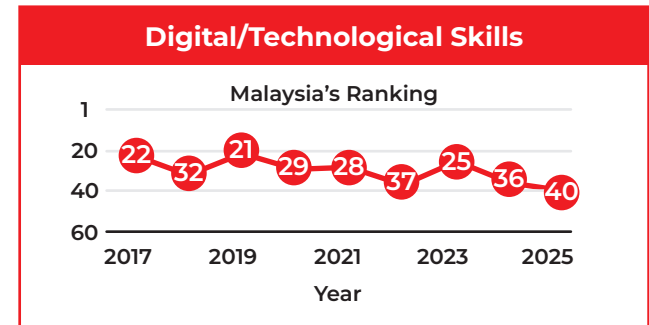
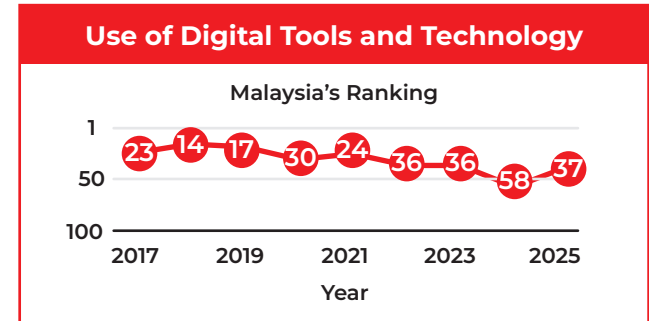
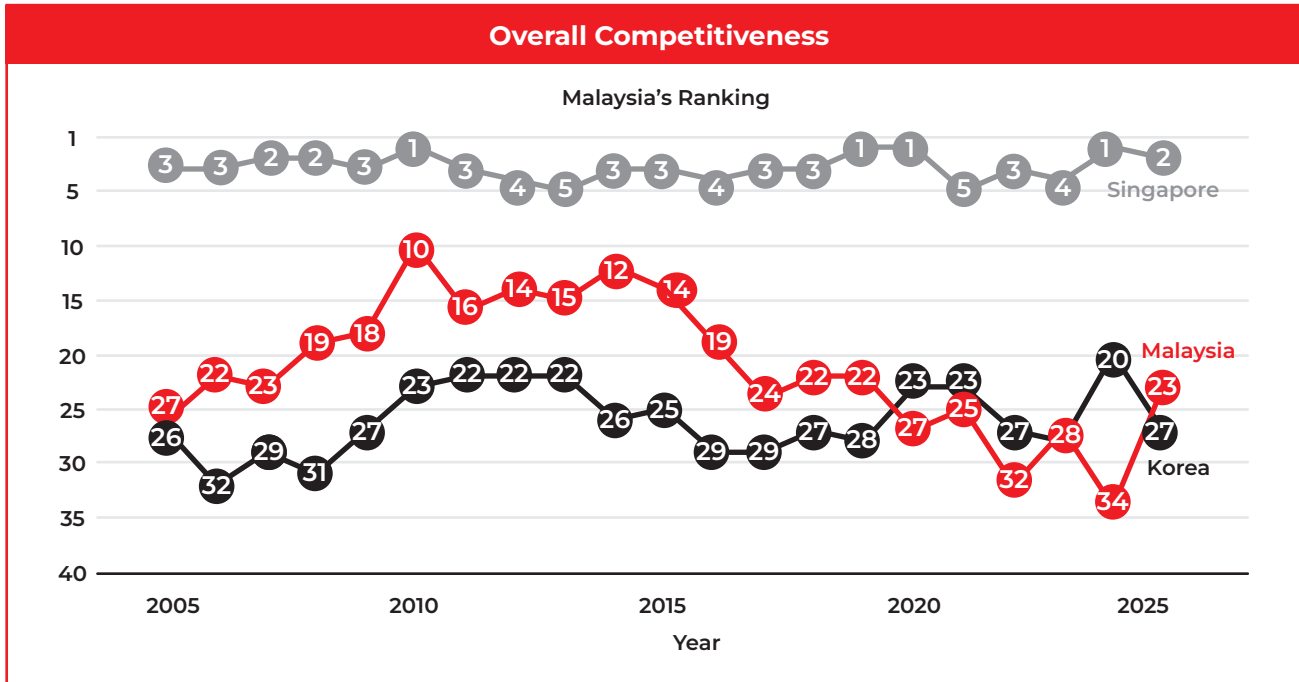
# UNLOCKING NATIONAL COMPETITIVENESS: YOUR CLINIC'S PIVOTAL ROLE

Malaysia stands at a pivotal moment, poised to secure its destiny as a top 12 global competitor by 2030. Malaysia's current position in overall competitiveness and selected indicators under World Competitiveness Yearbook published by Institute for Management Development (IMD), however, shows fluctuating performance.

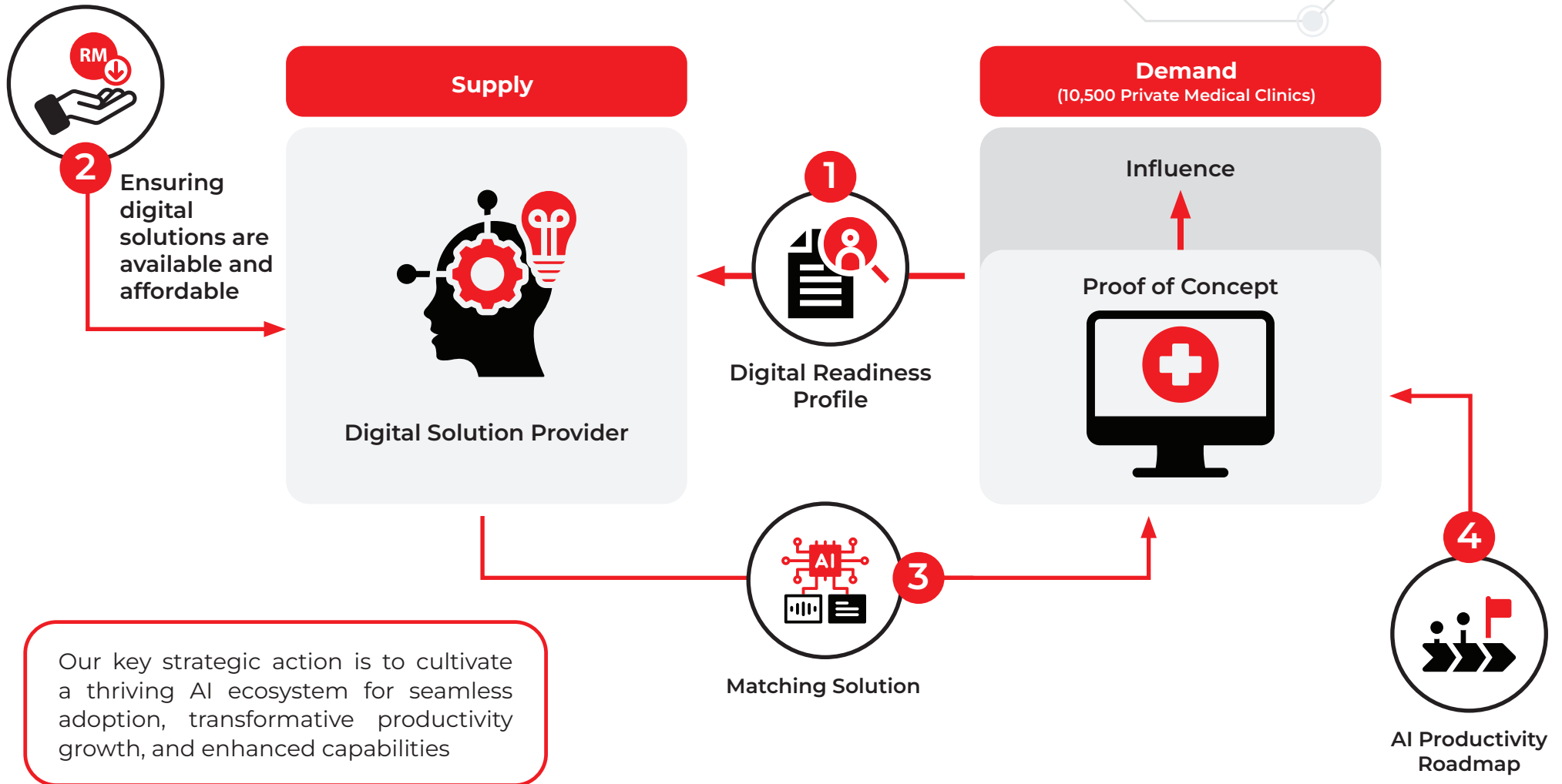
This highlights that proactive and swift AI adoption is not just an advantage but a crucial necessity for your clinic to stabilise its growth, contribute to national resilience, and truly compete with leading regional players like Singapore and Korea. This roadmap is your strategic blueprint, revealing the urgent, actionable steps that will unlock a prosperous AI future, with your clinic at the forefront.



# UNLOCKING NATIONAL COMPETITIVENESS: YOUR CLINIC'S PIVOTAL ROLE



# ACTIVATING YOUR AI ADVANTAGE: THE ECOSYSTEM FOR CLINIC TRANSFORMATION



## 1 Your AI Readiness Profile



At the heart of this ecosystem is your AI Readiness Profile. This crucial first step is all about your clinic's unique situation. It helps us understand your current digital maturity and specific needs, ensuring that any AI solution you explore is perfectly tailored.

## 2 Supply : Expert AI Solution Providers



On the left, we have the Supply side: a curated network of expert AI solution providers. This dynamic network is focused on developing cutting-edge AI solutions that are both high-performing and pragmatically designed for accessibility and viability. They deliver the foundational technology essential to power your clinic's journey towards unprecedented productivity and transformation.

## 5 AI Productivity Roadmap



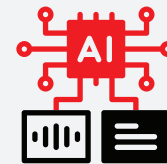
Guiding this entire process is the AI Productivity Roadmap. It outlines clear, actionable steps for a smooth and successful AI integration that is tailored for maximum productivity. It provides the structure you need to confidently move from foundational digital steps to transformative AI capabilities.

## 3 Demand : Forward-Thinking Clinics



On the right is the Demand side, representing forward-thinking private medical clinics just like yours, poised to embrace the future. With the influence of early adopters highlighted by successful Proof of Concepts (POCs), their tangible results demonstrate the real-world benefits of AI adoption, inspiring confidence and providing powerful social proof for their peers.

## 4 Solution Matching



Through Solution Matching, your clinic will be expertly paired with the AI tools that best fit your specific readiness profile and operational needs. This eliminates the guesswork, accelerates your AI adoption journey, and ensures you get the right tools to boost your productivity without wasted effort.

# EXPLORING AI: UNDERSTANDING YOUR DIGITAL TRANSFORMATION JOURNEY

This roadmap is your clear guide, outlining progressive adoption strategies tailored for every stage of your clinic's digital evolution – from foundational steps to leading-edge innovation

| Level                 | Definition   | What This Means for Your Clinic  | Benefits to Expect   |
|-----------------------|--|--|--|
| <b>Foundational</b>   | Foundational tools to digitalise basic processes like record-keeping and sales   | Implementing essential digital tools to streamline core administrative processes, such as patient records and appointment scheduling | <b>Immediate Gains</b><br>Enhanced organisation, reduced manual errors, and a more professional patient experience from the outset                           |
| <b>Advancement</b>    | Integration of data-driven tools to optimise operations and improve traceability | Integrating data-driven tools to intelligently improve clinical workflows, enhance decision-making, and ensure full transparency     | <b>Smarter Operations</b><br>Boosted efficiency, improved patient safety through better tracking, and data-informed insights for superior care delivery      |
| <b>Transformative</b> | Automation and predictive systems leveraging AI                                  | Deploying sophisticated AI-powered automation and predictive systems that anticipate needs and elevate patient outcomes              | <b>Future-Proofing Your Practice</b><br>Revolutionary efficiency, proactive patient care, and a competitive edge through intelligent, foresightful solutions |

# FULL-SPECTRUM JOURNEY: DRIVING AI-POWERED PRODUCTIVITY FOR HOLISTIC SUCCESS

This blueprint strategically integrates cutting-edge AI across all your key operational areas, from patient engagement and clinical support to backend administration and supply chain management. By embracing smart automation and predictive insights, this guide empowers you to enhance both the crucial patient experience through more personalised care and swifter attention and optimise the operator's journey. The result is an unparalleled leap in productivity, ensuring your clinic not only keeps pace with the digital future but truly excels across every facet of its operation. This comprehensive coverage ensures you unlock new levels of efficiency and deliver elevated care

## Driving Operational Excellence

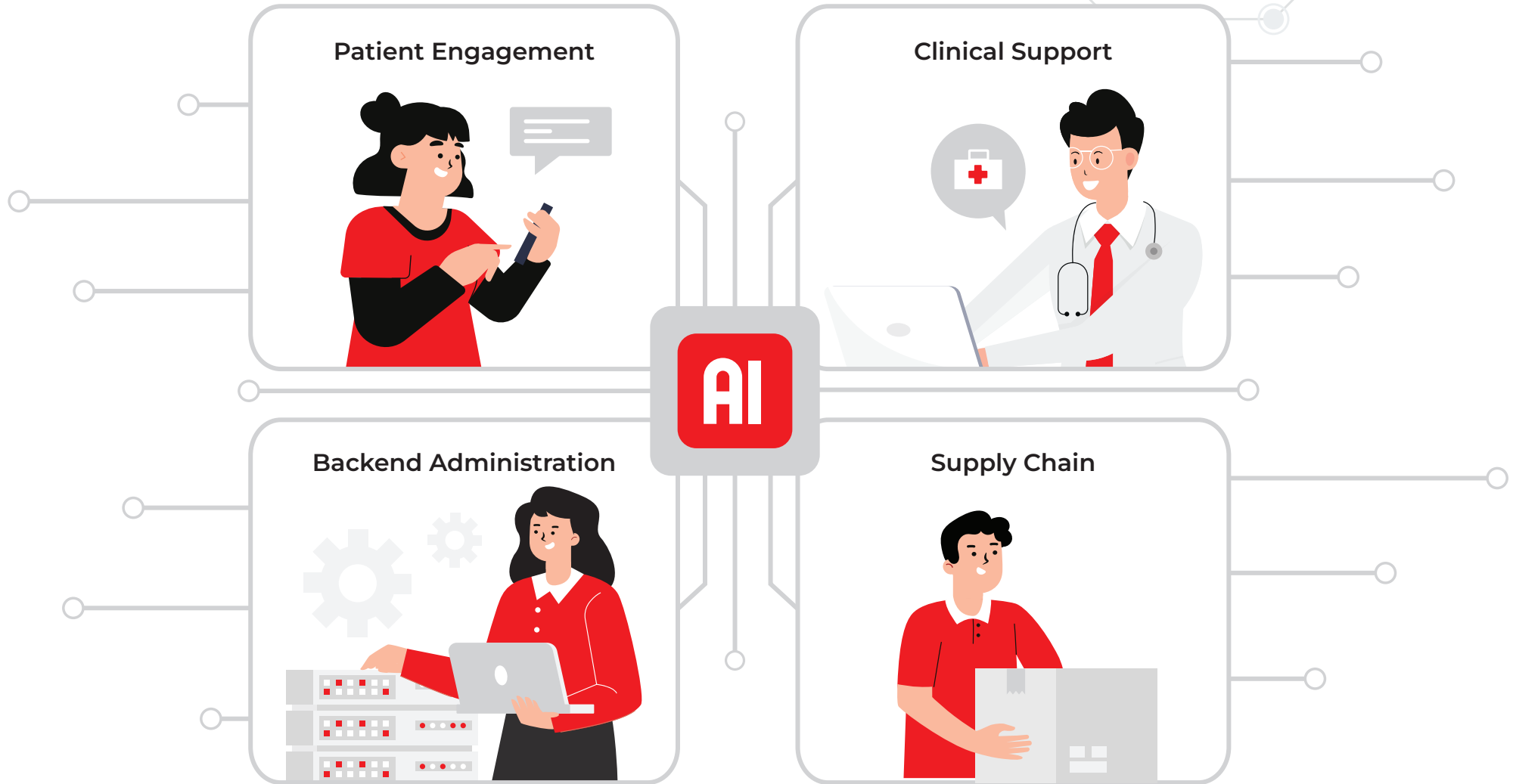
- 1 Procurement and Inventory Management
- 2 Sales & Marketing
- 3 Operational Support
- 4 Logistics & Distribution
- 5 Quality and Regulatory Compliance
- 6 Supply Chain Communication & Collaboration
- 7 Data Analytics & Reporting
- 8 Sustainability & Ethical Sourcing
- 9 Data Security & Privacy



## Elevating Patients' Journey

- 10 Access to Care
- 11 Patient Registration
- 12 Patient Consultation
- 13 Diagnosis & Treatment
- 14 Patient Engagement & Empowerment
- 15 Payment & Administration
- 16 Post-Treatment Care & Follow-Up
- 17 Patient-Centric Supply Chain

# FULL-SPECTRUM JOURNEY: DRIVING AI-POWERED PRODUCTIVITY FOR HOLISTIC SUCCESS



# CONNECTING YOU TO SOLUTIONS: AI ADOPTION IN PRIVATE MEDICAL CLINICS

This comprehensive table is your practical guide, detailing the progressive stages of AI adoption specifically for your private medical clinic. We've categorised key functions into clear Foundational, Advancement and Transformative levels, showcasing a tailored journey towards enhanced productivity, seamless automation, and intelligent, AI-driven insights – all designed for the unique Malaysian private medical clinic landscape.

Ready to see specific AI solutions for your clinic? Use the 'Quick Finder' below to jump directly to the areas most relevant to your immediate needs and explore your path to transformative growth

| Quick Finder                               |    | Q                                |    |
|--|----|----------------------------------|----|
| Procurement & Inventory Management         | 17 | Access to Care                   | 26 |
| Sales & Marketing                          | 18 | Patient Registration             | 27 |
| Operational Support                        | 19 | Patient Consultation             | 28 |
| Logistics & Distribution                   | 20 | Diagnosis & Treatment            | 29 |
| Quality Control & Regulatory Compliance    | 21 | Patient Engagement & Empowerment | 30 |
| Supply Chain Communication & Collaboration | 22 | Payment & Administration         | 31 |
| Data Analytics & Reporting                 | 23 | Post-Treatment Care & Follow-Up  | 32 |
| Sustainability & Ethical Sourcing          | 24 | Patient-Centric Supply Chain     | 33 |
| Data Security & Privacy                    | 25 |                                  |    |

**Category**

**Key Functions**

**Foundational**

**Advancement**

**Transformative**



**Procurement & Inventory Management**

- Streamline Supplier Management
- Enhance Inventory Tracking
- Simplify Order Processing

- Manual Ordering
- Basic Stock Records

- Digital Procurement Platforms
- Automated Inventory Management
- Supplier Portals for Direct Ordering & Tracking

- AI-driven Demand Forecasting
- Predictive Inventory Optimization
- AI-powered Demand Forecasting
- Predictive Inventory Optimisation
- AI-assisted Supplier Performance Analysis
- AI For Supply Chain Authenticity Checks
- IoT Sensors with AI for Real-time Stock Alerts

**Suggested Tools**

- Manual Ledgers/ Stock Cards
- Phone/Fax/ WhatsApp for orders
- Basic Spreadsheets (e.g., Excel, Google Sheets)
- Simple Email (e.g., Gmail, Outlook)

**Suggested Tools**

- Cloud-based Inventory Management Systems (e.g., Zoho Inventory, Odoo Inventory, Klink, Clinica)
- Supplier Relationship Management (SRM) Software (e.g., Basic modules of SAP Ariba)
- Barcode Scanners/ Readers

**Suggested Tools**

- AI-Powered Demand Forecasting Software (e.g., AI Module in ClinicAssist CMS, GMDH Streamline (Scalable Plans))
- Predictive Analytics Platforms with ML Capabilities (e.g., Microsoft Power BI (with Azure ML Integration), Google Looker Studio (with Custom ML Connectors))
- AI-Driven Procurement Bots/Assistants (e.g., AI-Powered Assistant (as feature in Integrated CMS), Specific Vendor Chatbots)
- AI-Driven Anomaly Detection (as Feature in Advanced Inventory CMS Modules)
- IoT Sensors Integrated with AI For Real-Time Inventory Monitoring: Smart Cabinets (e.g., B Medical Systems with IoT)
- IoT-Enabled Temperature Loggers (e.g., TempSen with Cloud Analytics)

**Category**

**Key Functions**

**Foundational**

**Advancement**

**Transformative**



**Sales & Marketing**

- Attract New Patients
- Cultivate Patient Relationships (CRM)
- Launch Effective Marketing Campaigns
- Build Brand Awareness & Reputation

- Basic Website/Social Media Presence
- Limited Targeted Marketing (e.g., Flyers)
- Manual Patient Communication

- Customer Relationship Management (CRM) Systems
- Targeted Digital Advertising (e.g., Social Media Ads)
- Email Marketing Automation
- Online Appointment Booking Integration

- AI-Powered Personalised Marketing
- AI Chatbots for Enhanced Patient Engagement & Lead Generation
- Predictive Analytics for Marketing Campaign Optimisation
- AI-Driven Sentiment Analysis for Brand Monitoring
- AI For Smart Content Creation & Recommendations

**Suggested Tools**

- Basic Website Builders/Social Media Pages
- Printed Marketing Materials
- Phone/Email for Patient Communication
- Simple Contact Lists

**Suggested Tools**

- CRM Platforms (e.g., HubSpot, Zoho CRM)
- Social Media Advertising Platforms (e.g., Facebook Ads Manager)
- Email Marketing Platforms (e.g., Mailchimp, Constant Contact)
- Online Booking Systems Integrated with Website/Social Media

**Suggested Tools**

- AI-Integrated CRM Platforms with Marketing Automation Features (e.g., Zoho CRM Plus (with Zia AI), HubSpot Marketing Hub (Professional Tier with Predictive Lead Scoring))
- AI-Powered Chatbot Platforms for Healthcare (e.g., Ada Health (Healthcare AI Chatbot SaaS), Intercom (with Answer Bot AI Features))
- Marketing Analytics Platforms with Predictive Capabilities (e.g., Google Analytics 4 (with Predictive Metrics), Mixpanel (with Predictive Analytics))
- AI-Driven Sentiment Analysis Tools (e.g., Mention (For Social Listening With Sentiment Analysis), Awario (for Social Listening & Sentiment))
- AI Content Generation Assistants (e.g., ChatGPT (for Draft Generation), Jasper (for Marketing Copy & Ideas))

**Category**

**Key Functions**

**Foundational**

**Advancement**

**Transformative**



- Optimise HR & Talent Management
- Streamline Finance & Accounting
- Drive Service Innovation
- Ensure Regulatory Compliance

- Manual Record-Keeping and Payroll
- Siloed Operations
- Limited Regulatory Compliance Procedures

- Cloud-Based HRM & Payroll Automation
- Digital Performance Management Analytics
- Automated Compliance Monitoring

- AI-Driven HR Management and Talent Optimisation
- AI For Proactive Regulatory Compliance Monitoring
- AI-Powered Financial Forecasting and Revenue Intelligence
- Intelligent Process Automation (IPA) for Clinic Administration
- AI-Driven Service Innovation Analytics

**Suggested Tools**

- Microsoft Excel, Google Sheets
- Basic Accounting Software (e.g., QuickBooks, Wave Accounting)
- Basic Project Management Tools (e.g., Trello, Notion)

**Suggested Tools**

- Cloud-Based HR & Payroll Systems (e.g., PayrollPanda (For Malaysia), Talenox (For Southeast Asia HR/Payroll))
- Digital Analytics Dashboards (e.g., Google Data Studio, Microsoft Power BI)
- Automated Compliance Tracking Software (e.g., Integrated CMS Compliance Modules, Basic GRC Software from Local Vendors)
- Integrated Clinic Management Systems (CMS) (e.g., Klink, ClinicAssist)

**Suggested Tools**

- AI Modules within Clinic Management Systems (CMS) for HR & Finance (e.g., AI-Powered Features In Modern CMS (e.g., ClinicAssist, Klink))
- AI-Powered Compliance Monitoring & Risk Assessment Platforms (e.g., AI-Driven Compliance Analytics Module (Integrated In Advanced CMS), Vanta (for Automated Compliance Monitoring))
- Predictive Analytics Software for Financial Forecasting & Resource Optimisation (e.g., AI-Powered Forecasting Features (e.g., In Xero/QuickBooks Online Advanced), Custom Predictive Analytics Dashboards (Built With AI Backend))
- Intelligent Process Automation (IPA) Platforms with AI Capabilities (e.g., UiPath (Community Edition With AI Capabilities), Microsoft Power Automate (With AI Builder))
- AI-Driven Business Intelligence Tools for Service Innovation (e.g., Microsoft Power BI (With AI Insights/AutoML), Google Looker Studio (With Advanced AI Integrations))

## Category

## Key Functions

## Foundational

## Advancement

## Transformative



### Logistics & Distribution

- Manage Warehousing
- Coordinate Transportation
- Track Deliveries Precisely

- Manual dispatch
- Basic route planning
- Paper-based delivery records

- Digital warehouse management systems (for clinic stockrooms)
- GPS tracking for transport
- Electronic delivery confirmations (ePOD)
- Route Optimisation Software

- AI-powered dynamic route optimization
- Predictive logistics for supply chain resilience
- Automated delivery monitoring with AI anomaly detection
- AI-driven optimal dispatch/receiving scheduling

### Suggested Tools

- Paper-based Logs /Records
- Phone/Fax for Communication
- Maps/Manual Route Planning
- Simple Spreadsheets

### Suggested Tools

- Warehouse Management Systems (WMS) (e.g., integrated CMS modules, simpler SaaS WMS)
- GPS Tracking Systems (e.g., Google Maps API, Telematics)
- Electronic Proof of Delivery (ePOD) Apps
- Route Optimisation Software (e.g., Route4Me, Onfleet)

### Suggested Tools

- AI-integrated Logistics/Inventory Modules within Clinic Management Systems (CMS) (e.g., AI Module In Modern CMS (e.g., ClinicAssist with Logistics Features), Locus (Small Business Plans))
- Specialised AI Route Optimisation Software with Real-time Capabilities (e.g., Wise Systems (Scalable Plans), OptimoRoute (with AI-Driven Features))
- Predictive Supply Chain Analytics Platforms (e.g., AI-Driven Logistics Predictive Analytics (As Feature In Advanced CMS Modules))
- IoT Sensor Systems Integrated with AI for Critical Item Monitoring & Alerts (e.g., IoT-Enabled Temperature Loggers (e.g., TempSen With Cloud Analytics), Smart Cabinets For Supply Monitoring (e.g., By Local Vendors With AI Features))



### Quality Control & Regulatory Compliance

#### Category

#### Key Functions

- Ensure Product Traceability
- Manage Compliance Documentation
- Conduct Auditing Effectively
- Uphold Regulatory Compliance

#### Foundational

- Paper-Based Records
- Manual Audits
- Limited Product Tracking

#### Suggested Tools

- Paper Checklists/Forms
- Manual Logbooks/Records
- Basic Spreadsheets for Data Entry
- Physical Product Labels

#### Advancement

- Digital Quality Management Systems
- Electronic Audit Trails
- Track-and-Trace Systems

#### Suggested Tools


- Digital Quality Management Systems (QMS) (e.g., Integrated CMS Modules, Simpler SaaS QMS)
- Electronic Document Management Systems (EDMS) (e.g., SharePoint, Google Drive For Documentation)
- Track-and-Trace Software (e.g., Local CMS Modules)
- Digital Audit Tools (e.g., iAuditor, SafetyCulture)

#### Transformative

- AI-Powered Anomaly Detection
- AI For Proactive Compliance Monitoring And Reporting
- AI-Driven Product Authenticity And Quality Verification
- Predictive Analytics For Quality Improvement

#### Suggested Tools

- AI Modules within Clinic Management Systems (CMS) for Quality & Compliance (e.g., AI-Powered Features In Modern CMS (e.g., ClinicAssist, Klink))
- Specialised AI-Powered Anomaly Detection Platforms (e.g., Anomaly Detection Features In Advanced BI Tools (e.g., Power BI), Microsoft Azure Anomaly Detector (API For Developers))
- Predictive Analytics Software with Machine Learning Capabilities (e.g., Google Cloud AutoML (for Specific Custom Models with Developer Support), Power BI (with Azure ML Integration For Predictive Dashboards))
- AI Tools for Automated Audit Trail Analysis (e.g., AI-Driven Audit Trail Monitoring (as Feature in Advanced EMR/ CMS), Compliance AI Solutions (e.g., Vanta's AI Capabilities For Automated Checks))

| Category   | Key Functions  | Foundational   | Advancement   | Transformative   |
|--|--|--|---|--|
|  <p><b>Supply Chain Communication &amp; Collaboration</b></p> | <ul style="list-style-type: none"> <li>Facilitate Supplier Communication</li> <li>Optimise Inter-Departmental Coordination</li> <li>Enhance Information Sharing</li> </ul> | <ul style="list-style-type: none"> <li>Phone Calls</li> <li>Emails</li> <li>Basic Document Sharing</li> </ul> <p><b>Suggested Tools</b></p> <ul style="list-style-type: none"> <li>Phone Calls</li> <li>Email (e.g., Gmail, Outlook)</li> <li>Basic File Sharing (e.g., Email Attachments)</li> <li>Basic Spreadsheets (e.g., Excel, Google Sheets)</li> </ul> | <ul style="list-style-type: none"> <li>Collaborative Platforms</li> <li>Supplier Dashboards</li> <li>Real-Time Communication Tools</li> </ul> <p><b>Suggested Tools</b></p> <ul style="list-style-type: none"> <li>Collaborative Project Management Platforms (e.g., Asana, Trello)</li> <li>Supplier Portals/ Extranets</li> <li>Instant Messaging/ Collaboration Tools (e.g., Slack, Microsoft Teams)</li> <li>Cloud-Based Document Collaboration (e.g., Google Drive, SharePoint)</li> </ul> | <ul style="list-style-type: none"> <li>AI-Powered Collaborative Platforms</li> <li>Predictive Communication Analytics</li> <li>AI-Driven Intelligent Information Dissemination: Automatically Disseminates Critical Updates, Alerts, or New Protocols to Relevant Staff and Suppliers Based on Their Role, Current Tasks, or Predictive Needs</li> <li>AI-Assisted Knowledge Management for Clinic Operations</li> </ul> <p><b>Suggested Tools</b></p> <ul style="list-style-type: none"> <li>AI-Integrated Collaboration Platforms (e.g., Microsoft Teams (With AI Features Like Copilot), Slack (With AI Apps/Integrations))</li> <li>Communication Analytics Tools with AI (e.g., AI-Driven Communication Insights (Features in Advanced CRM/CMS like Zoho CRM with Zia AI), Google Workspace (with Smart Reply/Summary Features))</li> <li>AI-Powered Knowledge Management Systems (e.g., Freshdesk (with Freddy AI for Knowledge Base), Zendesk Guide (with AI Search Capabilities))</li> <li>Predictive Analytics Modules for Operational Communications (e.g., AI-Powered Dashboards for Communication Trends (in Microsoft Power BI with AI), Predictive Modules for Patient Portal Engagement (Integrated in Patient Portal Software with AI))</li> </ul> |



## Data Analytics & Reporting

| Category | Key Functions  | Foundational  | Advancement  | Transformative   |
|----------|--|---|--|--|
|          | <ul style="list-style-type: none"> <li>• Optimise Supply Chain Reporting</li> <li>• Monitor Performance Accurately</li> <li>• Analyse Costs Effectively</li> <li>• Generate Predictive Insights</li> </ul> | <ul style="list-style-type: none"> <li>• Manual Reporting</li> <li>• Basic Spreadsheets</li> <li>• Limited Data Analysis</li> </ul> <p><b>Suggested Tools</b></p> <ul style="list-style-type: none"> <li>• Manual Ledgers/ Notebooks</li> <li>• Basic Spreadsheets (e.g., Excel, Google Sheets)</li> <li>• Simple Calculators</li> <li>• Paper-Based Reports</li> </ul> | <ul style="list-style-type: none"> <li>• Digital Dashboards</li> <li>• Automated Performance Reports</li> <li>• Data Visualisation Tools</li> </ul> <p><b>Suggested Tools</b></p> <ul style="list-style-type: none"> <li>• Business Intelligence (BI) Dashboards (e.g., Tableau, Power BI, Google Data Studio)</li> <li>• Automated Reporting Software (e.g., Integrated CMS Modules)</li> <li>• Data Visualisation Tools (e.g., Infogram, Datawrapper)</li> <li>• Cloud-Based Analytics Platforms (e.g., Google Analytics (for Website Traffic), Zoho Analytics (for Business Data))</li> </ul> | <ul style="list-style-type: none"> <li>• AI-Driven Predictive Analytics for Clinic Operations</li> <li>• Real-Time AI-Powered Performance Monitoring</li> <li>• AI-Powered Prescriptive Analytics for Decision Support</li> <li>• AI for Automated Insight Generation</li> </ul> <p><b>Suggested Tools</b></p> <ul style="list-style-type: none"> <li>• AI Modules within Clinic Management Systems (CMS) for Analytics &amp; Reporting (e.g., AI-Powered Features In Modern CMS (e.g., ClinicAssist, Klink))</li> <li>• Specialised AI-Driven Predictive Analytics Software (e.g., SaaS Solutions with Built-in ML Models) (e.g., Forecasty.ai (for General Business Forecasting), Zoho Analytics (with AI-Driven Insights for Business Data))</li> <li>• AI-Enabled Business Intelligence (BI) Platforms (e.g., Power BI/Tableau with ML Integrations) (e.g., Microsoft Power BI (with AI Insights/AutoML), Google Looker Studio (with Advanced AI Integrations))</li> <li>• Automated Insight Generation Tools with AI Capabilities (e.g., Automated Insights (for Generating Natural Language Narratives from Data), Power BI (With Q&amp;A Feature for Natural Language Querying))</li> </ul> |



**Sustainability & Ethical Sourcing**

| Category | Key Functions  | Foundational  | Advancement   | Transformative  |
|----------|--|---|---|---|
|          | <ul style="list-style-type: none"> <li>Track Environmental Impact</li> <li>Monitor Supplier Sustainability</li> <li>Verify Ethical Sourcing</li> <li>Manage Waste Effectively</li> </ul> | <ul style="list-style-type: none"> <li>Paper-Based Tracking</li> <li>Limited Sustainability Reporting</li> <li>Basic Waste Disposal</li> </ul> <p><b>Suggested Tools</b></p> <ul style="list-style-type: none"> <li>Paper-Based Records/Logs</li> <li>Basic Spreadsheets (e.g., Excel, Google Sheets)</li> <li>Physical Checklists</li> <li>Basic Waste Bins/ Containers</li> </ul> | <ul style="list-style-type: none"> <li>Digital Sustainability Dashboards</li> <li>Supplier Sustainability Ratings Management</li> <li>Automated Waste Management Systems</li> <li>Environmental Monitoring Sensors</li> </ul> <p><b>Suggested Tools</b></p> <ul style="list-style-type: none"> <li>Integrated CMS Modules for Sustainability Tracking (e.g., Klink (With Environmental Tracking Features), ClinicAssist (with Custom Reporting))</li> <li>Simpler SaaS Sustainability Reporting Platforms (e.g., ESG Reporting Tools Like Green Business Bureau (For SMBs))</li> <li>Digital Supplier Certification Management Tools (e.g., Supplier Management Modules In Zoho CRM)</li> <li>Automated Waste Monitoring Systems</li> <li>Environmental Monitoring Sensors</li> </ul> | <ul style="list-style-type: none"> <li>AI-Powered Resource Optimisation For Sustainability</li> <li>AI-Driven Ethical Sourcing Verification</li> <li>AI For Predictive Waste Management</li> <li>AI-Enhanced Circularity Analytics For Medical Supplies</li> <li>AI-Powered Environmental Anomaly Detection</li> </ul> <p><b>Suggested Tools</b></p> <ul style="list-style-type: none"> <li>AI Modules within Clinic Management Systems (CMS) for Sustainability Tracking (e.g., AI-Powered Features In Modern CMS (e.g., ClinicAssist, Klink))</li> <li>Specialised AI-Driven Resource Optimisation Software (e.g., Ecobee Smart Thermostats (With Eco+ AI Features For Energy Saving), Smart Lighting Systems (With AI-Powered Occupancy Sensors))</li> <li>AI-Powered Supplier Risk and Ethical Compliance Platforms (e.g., AI-Powered Supplier Scoring (as Feature In Advanced Procurement Platforms), Digital Supplier Compliance Dashboards (with AI Anomaly Detection))</li> <li>Predictive Analytics Tools for Waste Management Optimisation (e.g., AI-Powered Waste Audit &amp; Prediction Software (for Clinic-Specific Medical Waste), Predictive Waste Collection Optimisation Tools (Used by Waste Management Partners with AI))</li> <li>IoT Sensor Systems with AI for Environmental Monitoring &amp; Alerts (e.g., IoT-Enabled Temperature Sensors (e.g., Testo Saveris 2 With Predictive Alerts), Air Quality Monitors With AI (e.g., IQAir AirVisual Pro With Smart Alerts))</li> </ul> |



| Category | Key Functions  | Foundational   | Advancement  | Transformative  |
|----------|--|--|--|---|
|          | <ul style="list-style-type: none"> <li>• Protect Patient Data</li> <li>• Manage Consent Effectively</li> <li>• Ensure Secured Communication</li> </ul> | <ul style="list-style-type: none"> <li>• Basic Data Protection Measures</li> <li>• Manual Consent Form</li> <li>• Limited Secured Communication Channels</li> </ul> <p><b>Suggested Tools</b></p> <ul style="list-style-type: none"> <li>• Physical File Cabinets/Locks</li> <li>• Paper-Based Consent Forms</li> <li>• Basic Antivirus Software</li> <li>• Limited Password Protection</li> </ul> | <ul style="list-style-type: none"> <li>• Encrypted Patient Data Storage</li> <li>• Digital Consent Management</li> <li>• Secured Messaging Platforms</li> </ul> <p><b>Suggested Tools</b></p> <ul style="list-style-type: none"> <li>• Compliant Cloud-Based EMR/CMS Hosting (e.g., Local Secure Data Centres)</li> <li>• Digital Consent Management Platforms (e.g., Integrated CMS Features, Specialised SaaS)</li> <li>• Secure Messaging Apps (e.g., Signal, ProtonMail)</li> <li>• Firewalls and Intrusion Detection Systems (e.g., Basic Hardware Firewalls (e.g., From TP-Link, D-Link), Software Firewalls (e.g., Windows Defender Firewall))</li> </ul> | <ul style="list-style-type: none"> <li>• AI-Powered Threat Detection and Anomaly Monitoring</li> <li>• AI-Driven Secure Data Access and Consent Management</li> <li>• AI For Intelligent Patient Data De-Identification</li> <li>• AI-Enhanced Secure Communication and Fraud Prevention</li> <li>• AI-Assisted Privacy Compliance Auditing</li> </ul> <p><b>Suggested Tools</b></p> <ul style="list-style-type: none"> <li>• AI Modules within Clinic Management Systems (CMS) for Security &amp; Privacy (e.g., AI-Powered Features In Modern CMS (e.g., ClinicAssist, Klink))</li> <li>• AI-Powered Threat Detection and Anomaly Monitoring Solutions (e.g., Sophos Intercept X (With EDR &amp; AI), CrowdStrike Falcon (Endpoint Detection &amp; Response))</li> <li>• AI Tools for Secure Data Access Control &amp; Automated Consent Auditing (e.g., AI-Driven Access Governance Features (e.g., In Advanced CMS), Vanta (For Automated Compliance Auditing))</li> <li>• AI-Enabled Data De-Identification Platforms (e.g., AI-Enabled Data Masking &amp; Anonymisation Tools (As Service From Data Providers), Data Privacy Platforms (e.g., Nymity, If Scalable))</li> <li>• AI-Assisted Fraud Prevention Systems (e.g., Stripe Radar (For Payment Fraud Detection), AI-Powered Transaction Monitoring (Integrated In Online Payment Systems))</li> </ul> |

**Category**

**Key Functions**

**Foundational**

**Advancement**

**Transformative**



**Access to Care**

- Streamline Appointment Scheduling
- Retrieve Patient Information Instantly
- Enhance Communication with Providers

- Phone Calls
- Physical Visits for Booking
- Paper-Based Information Leaflets

- Enhancing Efficiency and Control
- Online Appointment Booking
- Patient Portals with Basic Information
- Email Communication

- AI-Powered Intelligent Appointment Scheduling
- AI-Driven Personalised Patient Information and Education
- AI-Enhanced Telehealth Services
- Virtual AI Assistants for Patient Engagement
- AI for Optimised Patient Onboarding and Triage

**Suggested Tools**


- Phone/Telephone System: Patient Portals Paper Appointment Books/Calendars:
- Printed Brochures /Flyers
- Basic Information Desks/Reception


**Suggested Tools**

- Online Appointment Scheduling Systems (e.g., DoctorOnCall, BookDoc, Practo)
- Patient Portals (e.g., Integrated CMS Modules, Simpler SaaS Patient Engagement Platforms)
- Email Communication Systems (e.g., Gmail, Outlook)
- Clinic Websites with Online Forms

**Suggested Tools**

- AI Modules within Clinic Management Systems (CMS) for Scheduling & Patient Engagement (e.g., AI-Powered Features In Modern CMS (e.g., ClinicAssist, Klink))
- Specialised AI Chatbot and Virtual Assistant Platforms for Healthcare (e.g., Ada Health (Healthcare AI Chatbot SaaS), Intercom (with Answer Bot AI Features))
- AI-Powered Personalisation Engines for Patient Education(e.g., AI-Driven Content Personalisation (as Feature in Patient Portals), HealthTap (AI-Powered Health Information Platform))
- AI-Enhanced Telehealth Platforms: (e.g., Doctor Anywhere (with AI Features for Symptom Checker), Halodoc (with AI Features for Pre-Consul (e.g., AI-Powered Dashboards for Patient Flow (e.g., in Microsoft Power BI with AI), Predictive Modules for Patient Onboarding (Integrated in CMS))

| Category   | Key Functions  | Foundational  | Advancement   | Transformative  |
|--|--|---|---|---|
|  <p><b>Patient Registration</b></p> | <ul style="list-style-type: none"> <li>• Streamline Patient Pre-Registration</li> <li>• Expedite Patient Check-in</li> <li>• Validate Identity Securely</li> <li>• Optimise Patient Record Creation /Update</li> </ul> | <ul style="list-style-type: none"> <li>• Manual Data Collection (Patient Details)</li> <li>• In-person Check-in</li> <li>• Paper-based Record Creation</li> </ul> <p><b>Suggested Tools</b></p> <ul style="list-style-type: none"> <li>• Paper Forms/ Documents</li> <li>• Manual Logbooks</li> <li>• Physical Sign-in Sheets</li> <li>• Basic Patient Information Desks</li> </ul> | <ul style="list-style-type: none"> <li>• Online Pre-registration Forms</li> <li>• Digital Check-in Systems</li> <li>• Electronic Patient Record Creation</li> </ul> <p><b>Suggested Tools</b></p> <ul style="list-style-type: none"> <li>• Online Registration Portals (e.g., Clinic Website Forms, DocuSign For Forms)</li> <li>• Digital Check-In Kiosks</li> <li>• Electronic Medical Record (EMR) Modules for Registration</li> <li>• Patient Portals for Basic Data Entry</li> </ul> | <ul style="list-style-type: none"> <li>• AI-Powered Predictive Patient Arrival and Check-In</li> <li>• AI-Enhanced Biometric Patient Identification:</li> <li>• AI for Intelligent Patient Data Capture and Validation</li> <li>• AI-Driven Automated Patient Onboarding</li> <li>• AI for Streamlined Identity and Payment Verification</li> </ul> <p><b>Suggested Tools</b></p> <ul style="list-style-type: none"> <li>• AI Modules within Clinic Management Systems (CMS) for Predictive Scheduling &amp; Registration (e.g., AI-Powered Features In Modern CMS (e.g., ClinicAssist, Klink))</li> <li>• Biometric Identification Systems with AI Capabilities (e.g., Fingerprint Scanners With AI Matching (e.g., ZKTeco), Facial Recognition Systems (e.g., from Local AI Security Vendors))</li> <li>• AI-Powered Data Capture And Validation Tools (e.g., AI-Driven OCR for Forms (e.g., Google Cloud Vision AI), Intelligent Document Processing Software (e.g., Rossum))</li> <li>• AI Chatbots/Virtual Assistants for Patient Registration Support (e.g., Ada Health (AI Chatbot For Patient Triage), Custom Chatbots (e.g., Built With Google Dialogflow For Websites))</li> <li>• AI Tools for Automated Identity and Payment Verification (e.g., Stripe Radar (for Payment Fraud Detection), Identity Verification SaaS (e.g., Veriff, Onfido with AI Features))</li> </ul> |

| Category   | Key Functions   | Foundational  | Advancement  | Transformative   |
|--|---|---|--|--|
|  <p><b>Patient Consultation</b></p> | <ul style="list-style-type: none"> <li>• Capture Patient History &amp; Symptoms</li> <li>• Optimise Clinical Documentation</li> <li>• Deliver Patient Education &amp; Communication</li> <li>• Manage Follow-Up &amp; Referrals Seamlessly</li> </ul> | <ul style="list-style-type: none"> <li>• Manual History Taking (Pen And Paper)</li> <li>• Handwritten Clinical Notes</li> <li>• Verbal Patient Education</li> <li>• Manual Follow-Up Scheduling</li> </ul> <p><b>Suggested Tools</b></p> <ul style="list-style-type: none"> <li>• Paper Forms/ Templates</li> <li>• Patient Folders/ Charts</li> <li>• Basic Diaries/ Calendars for Scheduling</li> </ul> | <ul style="list-style-type: none"> <li>• Electronic Patient History Forms</li> <li>• Electronic Clinical Notes (Within EMR/CMS)</li> <li>• Digital Patient Education Resources (e.g., via Portal)</li> <li>• Electronic Follow-Up Scheduling and Reminders</li> </ul> <p><b>Suggested Tools</b></p> <ul style="list-style-type: none"> <li>• Electronic Medical Record (EMR)/Clinic Management System (CMS) (e.g., ClinicAssist, Klink)</li> <li>• Digital Dictation Software (e.g., Dragon Medical One (Cloud-based), Google Docs Voice Typing)</li> <li>• Patient Portals for Information Sharing (e.g., Integrated CMS Patient Portals (e.g., Meditrac Patient Portal), Practo Connect)</li> <li>• Automated SMS/Email Reminders</li> </ul> | <ul style="list-style-type: none"> <li>• AI-Powered Symptom Assessment and History Taking</li> <li>• AI-Assisted Clinical Documentation</li> <li>• AI-Driven Patient Education and Personalised Communication</li> <li>• AI For Predictive Follow-Up and Referral Optimisation</li> <li>• AI-Enabled Clinical Decision Support during Consultation</li> </ul> <p><b>Suggested Tools</b></p> <ul style="list-style-type: none"> <li>• AI Chatbots For Pre-Consultation Intake (e.g., Ada Health (Healthcare AI Chatbot SaaS), Custom Chatbots (e.g., Built With Google Dialogflow For Websites))</li> <li>• AI-Driven Medical Transcription Software (e.g., Nuance Dragon Medical One (Cloud-based AI), Google Cloud Speech-To-Text (API For Developers))</li> <li>• AI Modules within CMS for Smart Documentation &amp; Patient Education (e.g., AI-Powered Features In Modern CMS (e.g., ClinicAssist, Klink))</li> <li>• AI-Powered Patient Education Platforms (e.g., HealthTap (AI-Powered Health Information Platform), Welltok (Consumer Health Engagement Platform With AI))</li> <li>• AI-Enabled Clinical Decision Support Systems (CDSS) (e.g., VisualDx (For Diagnostic Support With AI), Integrated CDSS Modules (e.g., Within Advanced Clinic Management Systems))</li> </ul> |

**Category**

**Key Functions**

**Foundational**

**Advancement**

**Transformative**



**Diagnosis & Treatment**

- Perform Diagnostic Testing
- Develop Treatment Planning
- Manage Medication Effectively

- Manual Testing
- Paper-based Records
- Limited Treatment Options

- Digital Diagnostic Tools
- Electronic Health Records (EHR)
- Personalised Treatment Plans

- AI-Powered Diagnostic Assistance
- AI-Guided Personalised Treatment Planning
- AI for Intelligent Remote Patient Monitoring and Alerting
- AI-Driven Clinical Decision Support Systems (CDSS)
- AI-Assisted Medication Management and Adherence

**Suggested Tools**


- Manual Diagnostic Equipment (e.g., Stethoscope, Thermometer)
- Paper Patient Charts/Records
- Basic Lab Equipment with Manual Data Entry
- Physical Prescription Pads

**Suggested Tools**

- Digital Diagnostic Imaging (e.g., Digital X-Ray, Ultrasound)
- Electronic Health Record (EHR) Systems (e.g., Integrated CMS Modules, ClinicAssist)
- Laboratory Information Systems (LIS) (e.g., Basic LIS Modules (Integrated In CMS), Standalone SaaS LIS For Small Labs (e.g., LabCollector))
- Electronic Prescribing (e-Prescribing) Systems (e.g., Integrated CMS e-Prescribing (e.g., In Klink/ ClinicAssist), Standalone e-Prescribing Apps (e.g., DocPulse e-Prescribing))

**Suggested Tools**

- AI Modules within Clinic Management Systems (CMS) for Diagnosis & Treatment (e.g., AI-Powered Features in Modern CMS (e.g., ClinicAssist, Klink))
- Specialised AI-Powered Diagnostic Software (e.g., VisualDx (for Diagnostic Support with AI), DermEngine (AI for Dermatology Image Analysis))
- AI-Driven Clinical Decision Support Systems (CDSS) (e.g., UpToDate (with AI-Enhanced Search), Integrated CDSS Modules (e.g., Within Advanced Clinic Management Systems))
- AI-Enhanced Remote Patient Monitoring (RPM) Platforms (e.g., Biofourmis (for Advanced RPM with AI), Current Health (for RPM & AI-Driven Insights))
- AI Tools for Personalised Medication Management & Adherence (e.g., Medisafe (with AI-Powered Adherence Features), AI-Driven Medication Management Modules (e.g., Integrated in Patient Portals))

| Category   | Key Functions   | Foundational  | Advancement   | Transformative   |
|--|---|---|---|--|
|  <p><b>Patient Engagement &amp; Empowerment</b></p> | <ul style="list-style-type: none"> <li>• Health Education</li> <li>• Self-Management Tools</li> <li>• Support Networks</li> </ul> | <ul style="list-style-type: none"> <li>• Paper-based Educational Materials</li> <li>• Limited Patient Interaction</li> <li>• Basic Support Groups</li> </ul> <p><b>Suggested Tools</b></p> <ul style="list-style-type: none"> <li>• Printed Brochures /Pamphlets</li> <li>• Basic Health Information Posters</li> <li>• In-Person Support Group Meetings</li> <li>• Physical Health Journals/Diaries</li> </ul> | <ul style="list-style-type: none"> <li>• Online Health Resources</li> <li>• Digital Self-Management Tools</li> <li>• Online Patient Communities</li> </ul> <p><b>Suggested Tools</b></p> <ul style="list-style-type: none"> <li>• Clinic Websites/Portals with Health Information</li> <li>• Digital Self-Management Apps (e.g., For Tracking Health Data (e.g., MyFitnessPal, Google Fit), Medication Reminders (e.g., Medisafe))</li> <li>• Online Patient Forums/ Communities (e.g., Through Patient Portals)</li> <li>• Email Newsletters/ Health Tips (e.g., Mailchimp, Constant Contact)</li> </ul> | <ul style="list-style-type: none"> <li>• AI-Driven Personalised Health Education</li> <li>• AI-Powered Virtual Health Assistants</li> <li>• AI for Predictive Patient Engagement</li> <li>• AI-Enhanced Digital Self-Management Tools</li> <li>• AI-Assisted Digital Therapeutics (where applicable)</li> </ul> <p><b>Suggested Tools</b></p> <ul style="list-style-type: none"> <li>• AI Modules within Clinic Management Systems (CMS) for Patient Engagement (e.g., AI-Powered Features in Modern CMS (e.g., ClinicAssist, Klink))</li> <li>• AI-Powered Chatbots And Virtual Assistant Platforms For Healthcare: (e.g., Ada Health (Healthcare AI Chatbot SaaS), Intercom (with Answer Bot AI Features))</li> <li>• AI-Powered Chatbots and Virtual Assistant Platforms for Healthcare (e.g., AI-Driven Content Personalisation (as Feature in Patient Portals), HealthTap (AI-Powered Health Information Platform))</li> <li>• AI-Driven Personalisation Engines for Health Education (e.g., AI-Driven Content Personalisation (as Feature in Patient Portals), HealthTap (AI-Powered Health Information Platform))</li> <li>• AI-Enhanced Digital Health Apps with Predictive Capabilities (e.g., Omada Health (for Chronic Disease Management with AI), Noom (AI for Weight Management and Behaviour Change))</li> <li>• AI-Assisted Digital Therapeutics Platforms (e.g., AI-Personalised Mental Wellness Apps (e.g., Wysa), AI-Driven Digital Exercise Programmes (e.g., Kaia Health))</li> </ul> |

**Category**

**Key Functions**

**Foundational**

**Advancement**

**Transformative**



**Payment & Administration**

- Manage Billing Processes
- Handle Insurance Claims Efficiently
- Automate Administrative Processes

- Manual Billing
- Paper-Based Claim

- Online Billing And Payment
- Digital Claims Processing
- Automated Administrative Tasks

- AI-Powered Intelligent Claims Processing and Verification
- AI for Predictive Resource Allocation
- AI-Enhanced Intelligent Process Automation (IPA)
- AI-Driven Financial Forecasting and Revenue Optimisation
- AI for Fraud Detection In Payments and Claims

**Suggested Tools**


- Manual Invoice Books/Receipts
- Paper-Based Claim Forms
- Basic Filing Cabinets/Folders
- Manual Calculation Tools (e.g., Calculators)

**Suggested Tools**

- Online Payment Gateways (e.g., FPX, Stripe, PayPal)
- Digital Claims Platforms (e.g., eClaims Portals (Used by Insurers in Malaysia), Integrated CMS Modules (e.g., in Klink/ClinicAssist))
- Clinic Management Systems (CMS)
- Automated Task Management Tools (e.g., Asana (Basic Plan For Task Automation), Microsoft To Do (for Simple Task Lists))

**Suggested Tools**

- AI Modules within Clinic Management Systems (CMS) for Billing & Claims (e.g., AI-Powered Features in Modern CMS (e.g., ClinicAssist, Klink))
- AI-Powered Claims Verification and Fraud Detection Platforms (e.g., Stripe Radar (for Payment Fraud Detection), AI-Driven Claims Analytics (as Feature in Advanced CMS))
- Predictive Analytics Software for Resource Allocation (e.g., AI-Powered Forecasting Features (e.g., In Xero QuickBooks Online Advanced), Custom Predictive Analytics Dashboards (Built With AI Backend))
- AI Tools for Financial Forecasting and Revenue Optimisation (e.g., AI-Powered Forecasting Features (e.g., In Xero/QuickBooks Online Advanced), Custom Predictive Analytics Dashboards (Built with AI Backend))
- Intelligent Process Automation (IPA) Platforms with AI Capabilities: (e.g., UiPath (Community Edition with AI Capabilities), Microsoft Power Automate (with AI Builder))

| Category  | Key Functions   | Foundational   | Advancement   | Transformative  |
|---|---|--|---|---|
|  <p><b>Post-Treatment Care &amp; Follow-Up</b></p> | <ul style="list-style-type: none"> <li>Facilitate Rehabilitation</li> <li>Monitor Appointments &amp; Progress</li> <li>Manage Long-Term Care Proactively</li> </ul> | <ul style="list-style-type: none"> <li>Manual Scheduling of Follow-up Appointments</li> <li>Paper-based Monitoring</li> <li>Limited Remote Support</li> </ul> <p><b>Suggested Tools</b></p> <ul style="list-style-type: none"> <li>Paper Appointment Books/Calendars</li> <li>Manual Patient Records/Charts</li> <li>Phone Calls for Follow-Ups</li> <li>Basic Medical Equipment (e.g., Thermometers, Blood Pressure Cuffs)</li> </ul> | <ul style="list-style-type: none"> <li>Digital Platforms for Rehabilitation Exercises</li> <li>Remote Patient Monitoring Devices</li> <li>Online Support Groups</li> <li>Telehealth Platforms for Follow-Up Consultations</li> </ul> <p><b>Suggested Tools</b></p> <ul style="list-style-type: none"> <li>Digital Rehabilitation Platforms (e.g., Physitrack)</li> <li>Remote Patient Monitoring Devices (e.g., Smart Blood Pressure Monitors, Wearable Activity Trackers)</li> <li>Online Patient Support Groups/Forums</li> <li>Telehealth Platforms for Follow-Up Consultations</li> </ul> | <ul style="list-style-type: none"> <li>AI-Powered Personalised Post-Treatment Programmes</li> <li>AI For Predictive Patient Deterioration and Proactive Intervention</li> <li>AI-Driven Intelligent Remote Patient Monitoring</li> <li>AI-Enhanced Virtual Care And Rehabilitation</li> <li>AI-Assisted Long-Term Chronic Disease Management</li> </ul> <p><b>Suggested Tools</b></p> <ul style="list-style-type: none"> <li>AI Modules within Clinic Management Systems (CMS) for Post-Treatment Care (e.g., AI-Powered Features In Modern CMS (e.g., ClinicAssist, Klink))</li> <li>AI-Powered Remote Patient Monitoring (RPM) Platforms with Predictive Analytics (e.g., Biofourmis (For Advanced RPM with AI), Current Health (for RPM &amp; AI-Driven Insights))</li> <li>AI-Driven Personalised Digital Therapeutics Platforms (e.g., AI-Personalised Mental Wellness Apps (e.g., Wysa), AI-Driven Digital Exercise Programmes (e.g., Kaia Health))</li> <li>AI Tools For Chronic Disease Management Support (e.g., Lark Health (AI-Powered Chronic Disease Management), GlycoLeap (for Diabetes Management with AI Guidance))</li> <li>AI-Enhanced Virtual Rehabilitation Platforms (e.g., XRHealth (for VR Therapy with AI), MindMaze (for Neuro-Rehab with AI))</li> </ul> |

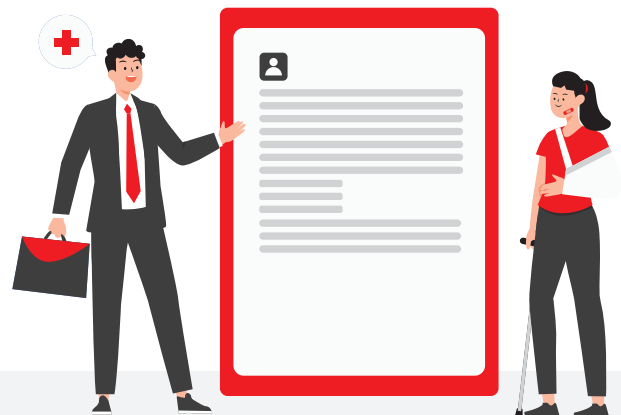


**Patient-Centric Supply Chain**

| Category | Key Functions  | Foundational  | Advancement   | Transformative   |
|----------|--|---|---|--|
|          | <ul style="list-style-type: none"> <li>• Manage Patient Orders</li> <li>• Ensure Home Delivery of Supplies</li> <li>• Personalise Medication Management</li> </ul> | <ul style="list-style-type: none"> <li>• Phone-Based Orders</li> <li>• Manual Delivery Scheduling</li> <li>• Limited Patient Communication</li> </ul> <p><b>Suggested Tools</b></p> <ul style="list-style-type: none"> <li>• Phone Calls Manual Order Forms</li> <li>• Basic Delivery Logs</li> <li>• Simple Medication Reminder Notes</li> </ul> | <ul style="list-style-type: none"> <li>• Online Patient Ordering Portals</li> <li>• Automated Delivery Notifications</li> <li>• Basic Medication Adherence Apps</li> </ul> <p><b>Suggested Tools</b></p> <ul style="list-style-type: none"> <li>• Patient Portals with Online Ordering (e.g., Integrated CMS Patient Portals (e.g., Meditrac Patient Portal), Practo Connect)</li> <li>• SMS/Email Delivery Notifications (e.g., SMS/Email Notification Services (e.g., Twilio For SMS), Integrated CMS Modules (e.g., In Klink/ ClinicAssist))</li> <li>• Basic Medication Adherence Apps (e.g., Medisafe, MyTherapy)</li> <li>• Basic E-Commerce Platforms (e.g., Shopify (For Clinic Online Store), WooCommerce (For WordPress Websites))</li> </ul> | <ul style="list-style-type: none"> <li>• AI-Powered Personalised Medication Management</li> <li>• AI-Driven Home Delivery Optimisation and Patient Communication</li> <li>• AI-Enhanced Patient-Centric Supply Chain Analytics</li> <li>• AI for Proactive Supply Replenishment based on Remote Patient Monitoring</li> </ul> <p><b>Suggested Tools</b></p> <ul style="list-style-type: none"> <li>• AI Modules within Clinic Management Systems (CMS) for Patient Engagement &amp; Supply Chain (e.g., AI-Powered Features In Modern CMS (e.g., ClinicAssist, Klink))</li> <li>• Specialised AI Medication Adherence Platforms (e.g., PillPack with AI Features, MedAdvisor with AI Modules)</li> <li>• AI-Driven Logistics Optimisation Software for Home Delivery (e.g., Locus (for Small Business Delivery Optimisation), OptimoRoute (with AI-Driven Features))</li> <li>• Predictive Analytics Tools Integrating Patient Health Data for Supply Chain Forecasting (e.g., AI-Powered Dashboards (e.g., in Microsoft Power BI with AI-Driven Forecasts), Integrated CMS Modules for Predictive Patient Needs (e.g., In ClinicAssist With Predictive Analytics))</li> </ul> |

# AI PRODUCTIVITY JOURNEY: ELEVATING PATIENT REGISTRATION AND CARE TRANSITION

## FOUNDATIONAL



### Focus

Core manual processes

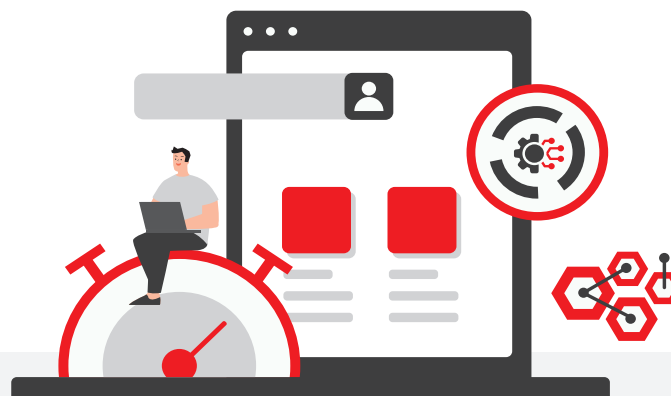
### What it involves

Relying on paper forms, manual patient data collection, and in-person check-in processes.

### Outcome

Essential operations, but often with bottlenecks and limited data insight

## ADVANCEMENT



### Focus

Digitalising and connecting patient touchpoints

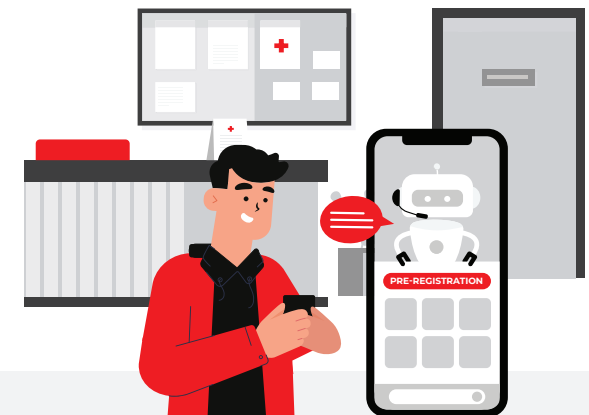
### What it involves

Implementing digital patient pre-registration, electronic check-in systems, and automated data entry into your Clinic Management Systems (CMS)

### Outcome

Essential operations, but often with bottlenecks and limited data insight

## TRANSFORMATIVE



### Focus

Predictive, intelligent, and autonomous patient experience

### What it involves

Leveraging AI for predictive scheduling, biometric patient identification, intelligent data capture, and automated onboarding guided by virtual AI assistants

### Outcome

Revolutionised patient flow, proactive care, unparalleled convenience, and a truly modern clinic experience

# REAL-WORLD PRODUCTIVITY SUCCESS STORIES: AI & DIGITALISATION IN ACTION

Discover how real-world digital transformation is revolutionising healthcare. This compelling case study, featuring an international private healthcare provider in Selangor renowned for delivering optimum and affordable medical services through its hospitals and clinics, vividly demonstrates how smart automation and seamless technology integration can deliver significant operational improvements, unlock substantial cost savings, and elevate patient satisfaction for your clinic.

## Challenge

Eliminating Lengthy Ward Admission Waiting Times

## Solution

Streamlining with Smart Automation

- 01 Automate Key Processes**  
Leveraging AppSheet to digitally transform core admission and discharge workflows. Provide real-time tracking and visibility for staff and patients.
- 02 Enhance Transparency**  
Providing real-time tracking and clear visibility for both staff and patients, reducing anxiety and improving coordination. Leveraging AppSheet to digitally transform core admission and discharge workflows. Provide real-time tracking and visibility for staff and patients.
- 03 Boost Communication**  
Implementing automation to dramatically improve interdepartmental communication, eradicating delays and enhancing collaboration.

| Category                       | Before  | After  |
|--------------------------------|---------|--------|
| Waiting time to ward admission | 3 hours | 1 hour |



## Tangible Value Delivered: A Model for Your Success

- 01 Productivity Gain**  
Achieve a remarkable 66 percent increase in efficiency annually by eliminating 125 daily hours of manual work, leading to substantial reductions in monthly operational costs and significant overall productivity improvements
- 02 Patient & Operational Excellence**  
Experience significantly faster, more efficient admission and discharge processes, leading directly to elevated patient satisfaction and seamlessly smoother clinic operations

# YOUR FIRST STEP: BEGIN YOUR AI TRANSFORMATION JOURNEY

Ready to move forward? Your journey begins with a simple, impactful action: **SCAN THE QR CODE TO ACCESS THE DIGITAL PLEDGE**



**MPC**  
MALAYSIA PRODUCTIVITY CORPORATION

*Pledge*  
**GO B.I.G WITH DIGITAL**  
*BREAKTHROUGH. INTEGRITY. GOOD*

I commit to Go B.I.G with Digital—to lead with integrity, embrace technology, and boost productivity. Digital is for everyone, and it starts with me.

*Saya komited untuk Go B.I.G with Digital—memimpin dengan integriti, menerima teknologi, dan meningkatkan produktiviti. Digital untuk semua, dan ia bermula dengan saya.*

Go B.I.G with Digital



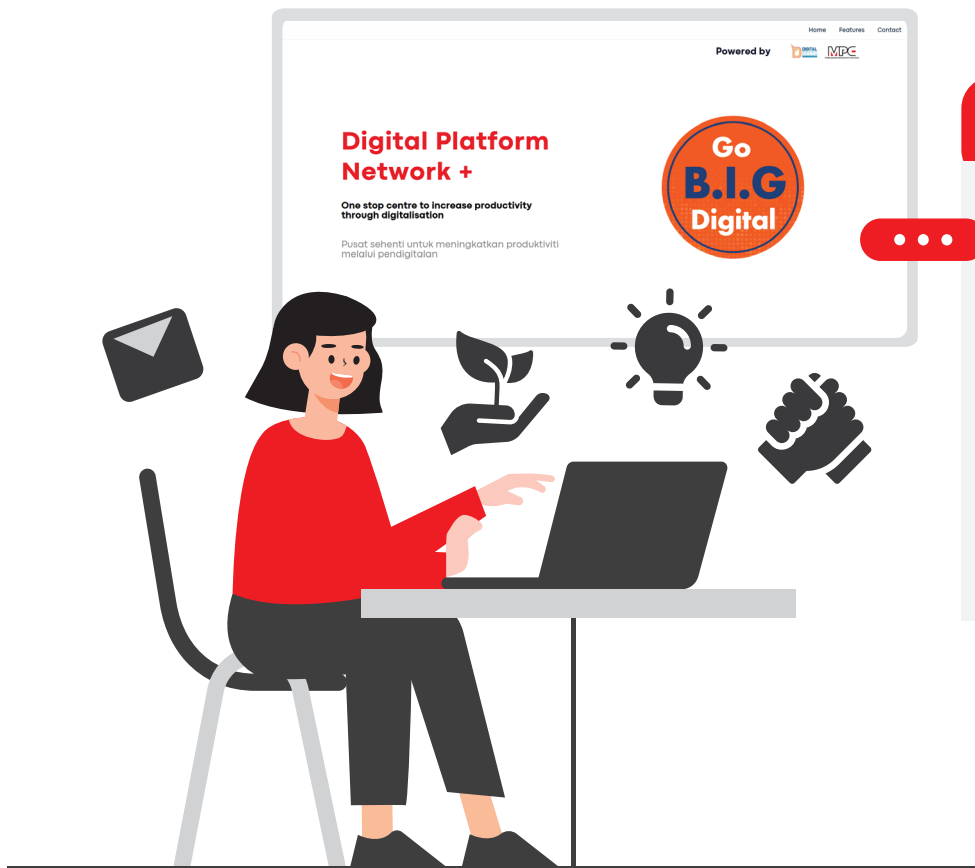
**Business Leader**  
(Organisation Leader)

**Dato' Wei Chuan Beng**  
Champion  
Digital Productivity Nexus

This commitment is your first step towards a smarter, more efficient, and future-proof clinic. By pledging, you gain immediate access to resources and a supportive community to kickstart your AI Productivity transformation.



# YOUR FIRST STEP: BEGIN YOUR AI TRANSFORMATION JOURNEY



For comprehensive insights into digitalisation tools and support, visit our platform

<https://www.mpc.gov.my/digitalplatformnetwork>



# LIST OF CONTRIBUTORS

This AI Productivity Roadmap for Private Medical Clinics is the result of dedicated collaboration and expertise from leading figures across the Malaysia Productivity Corporation, the Private Healthcare Productivity Nexus, and esteemed Industry Experts. Their collective vision and commitment ensure this blueprint provides unparalleled guidance for your clinic's transformative journey

## Malaysia Productivity Corporation

- 01 **Datuk Zahid bin Ismail**  
Director General
- 02 **Dr. Mazrina Mohamed Ibramsah**  
Deputy Director General
- 03 **Dr. Mohamad Norjayadi Tamam**  
Deputy Director General
- 04 **Dr. Halimahton Sa'diah Let**  
Director
- 05 **Puan Nur Syafina Anuar**  
Senior Manager
- 06 **Mr. Mohd Aizuddin bin Noor Azman**  
Assistant Manager  
Modern Management & Technology Division
- 07 **Mr. Haiqal Hadi Mohamad Ibrahim**  
Assistant Manager  
Modern Management & Technology Division

## Private Healthcare Productivity Nexus

- 01 **Dato' Dr. Jacob Thomas**  
Champion
- 02 **Datuk Dr. Thirunavukarasu Rajoo,**  
Governing Committee Member

## Industry Expert

- 01 **Dr. Dhesi Baha Raja**  
Global Health Digital Specialist & Consultant  
Public Health Physician
- 02 **Mr. Shaifubahrim Saleh**  
Co-Champion of Digital Productivity Nexus



The logo for Malaysia Productivity Corporation (MPC) features the letters 'MPC' in a bold, black, sans-serif font. The letter 'M' is stylized with two red triangles pointing upwards from its base. The letter 'P' has a red horizontal bar at its top right. The letter 'C' has a red horizontal bar at its top right. The background is white with abstract geometric shapes in red, dark red, and light grey, and several thin diagonal lines in light grey, orange, and red.

MALAYSIA PRODUCTIVITY CORPORATION